



## Trip description

### The secrets of Burgundy by bike in 7 days

Cycling trip from Chalon-sur-Saone to Beaune. Discover the world wide known vineyards, Cluny, Mâcon, Tournus, the Hospices of Beaune and the local dishes such as the famous boeuf bourguignon!

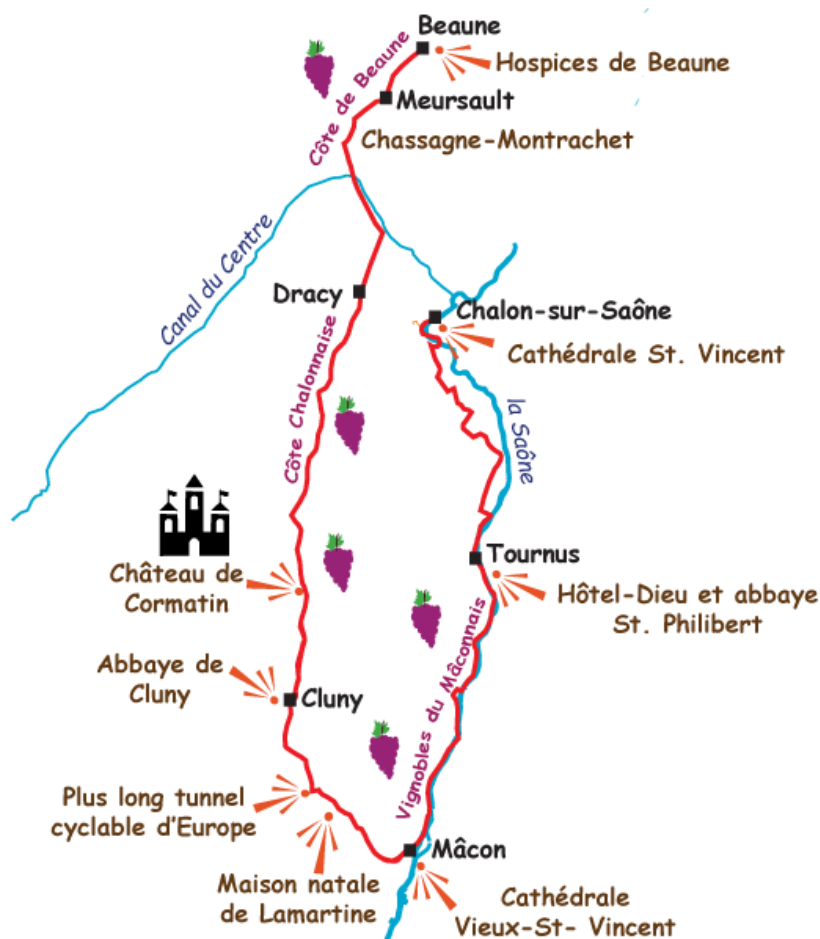


Destination	France
Location	Bourgogne
Duration	7 days
Difficulty Level	Easy
Validity	from March to October
Minimum age	10 years
Reference	BG0701

Type of stay  
itinerant trip



### Itinerary



© Le Vélo Voyageur

You discover the heart of Burgundy by bike. The burgund cuisine invites you to a culinary journey around the flavors of mustard, gingerbread, beef

bourguignon or froglegs. This bike tour is also an opportunity to stop at the many prestigious wine estates, which stretch along your cycling route: Pommard, Clos Vougeot, Meursault, etc..

The Burgundy tour takes you not only through the vineyards but also on a beautiful bike lane built on a former railway and on the banks of the Saône. You pass the towns of Cluny, Mâcon, Chalons-sur-Saône, Beaune, Tournus and you immerse into the alliance of culture, flavors and natural landscapes.

## Day 1

### Arrival in Chalons-sur-Saône

Discover the historical center and the beautiful cathedral of St. Vincent. Then stroll on the banks of the Saône river to enjoy the view over the bridge and the St. Lawrence Island. Chalons is also the birthplace of the photography. You can learn everything about it at the fascinating museum Nicéphore Niepce.

## Day 2

### Chalons - Tournus

Bike  
33km

You bike the Saône river banks out of Chalons and further the quiet, country roads through the villages. Take time to visit the historic town of Tournus, with its wealth of old buildings. It is one of the oldest monastic centers in Burgundy, featuring the remarkably preserved Abbey of Saint-Philibert. The Hotel-Dieu is a museum inside a former hospital with an apothecary.

## Day 3

### Tournus - Mâcon

Bike  
24/29/34km

Cycle path

Today, you have two possibilities to be entertained:

- full bike option: Your bike path goes along the banks of the Saone River. Follow the scenic path which is part of an ancient towpath. The entire ride is tranquil as you pass quaint villages and charming vistas on your way to Mâcon. As you enter Mâcon, admire the Saint-Laurent bridge. Take time to catch a glimpse at the Saint-Pierre church and the medieval Wood House. You can also enter the Ursulines Museum which presents the local history and an art collection.

- canoe + bike option: You need to be at least 5 years old and be able to swim. You begin your day by a canoe ride (you have two distance choices). The Saône river is your guide, relax and enjoy the journey. You can even take a swim! After the canoe, our partner will meet you and will give you back your bikes. You will then continue your ride by bike on the cycle path up to Mâcon.

## Day 4

### Mâcon - Cluny

Bike  
30km

Bike lane

You bike out of Mâcon and find quickly again the dedicated bike path through well-maintained vineyards. If you want a good warm-up, ride to the birthplace of the famous French writer, poet and politician, Lamartine. Otherwise, keep on the bike path to Berzé-la-Ville. Enter the Chapelle des Moines to see its magnificent mural paintings from the Middle Ages. At the foothill of the majestic fortress of Berze-le-Chatel, you ride 1.6km through the longest bike-only tunnel in Europe. This tunnel is closed in the winter to protect a colony of bats! The bike path takes you finally to Cluny. End your day by discovering the history of the Abbey of Cluny, the largest monastic order of the medieval western world.

## Day 5

### Cluny - Dracy-le-Fort

The bike tour goes further on the quiet bike lane and then leads to the Castle of Cormatin, known for its 17th Century unique murals. Stroll across the massive drawbridge and view

Bike  
**49km**

Bike lane

the gardens and water features. You'll continue riding on the dedicated bike path through cool forests, vast vineyards and pastoral fields. Be sure to stop in the villages of Buxy, Givry and Dracy-le-Fort and enjoy the wines and the atmosphere of Burgundy!

## Day 6

### Dracy-le-Fort - Beaune

Bike  
**46/52km**

Drive slowly on the towpath of the Canal du Centre to Santenay. You can visit the castle of Rully on the way (+6kms). Then you definitely enter the vineyard region by visiting the spectacular vineyards of the Côte de Beaune and leisurely stroll around the winehills of Chassagne-Montrachet, Puligny-Montrachet, Meursault, Pommard or Beaune. A real treat!

## Day 7

### Beaune

Known for its glazed colored tiles, the town of Beaune is considered as the wine capital of Burgundy. Within its walls, the city bursted with prosperity, that came from trading fine wines produced in the surrounding vineyards. It has kept its charm with its half-timbered houses, mansions and cobblestone streets.

## Accommodation

### Category A

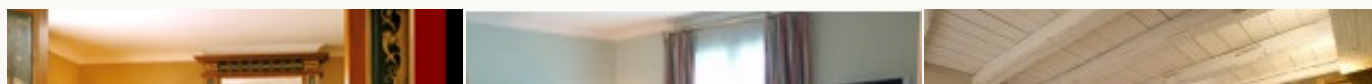
You'll enjoy staying in these clean and cozy 2-3 Star hotels that give you a pleasant rest after your day of biking. Breakfast is included when you spend the night in these friendly and family-run hotels.

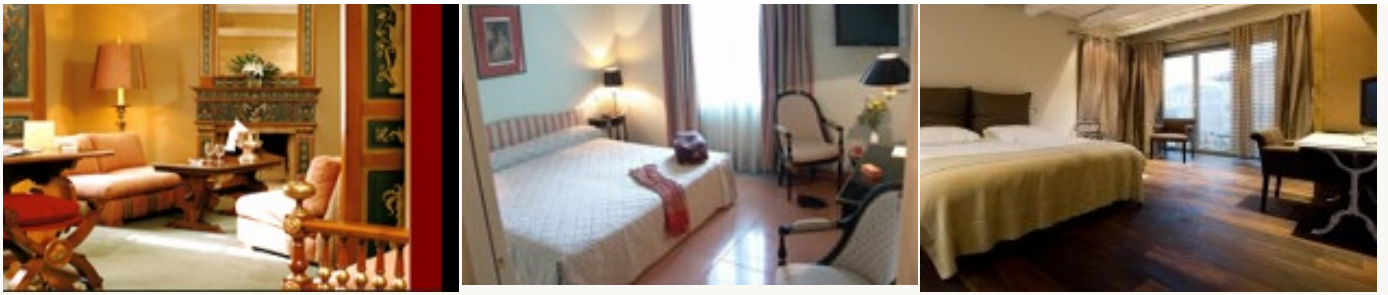


*\* Example of the type of accommodation*

### Category B

You'll get a good night's sleep when you stay in these 3-4 Star hotels or Bed and Breakfasts. All properties have been selected for their cleanliness, style and friendliness of the staff. A hearty breakfast is included!





\* Example of the type of accommodation

## Practical information

### To get to departure point:

**By plane:** flight to Lyon and then train to Chalon-sur-Saône.

**By train:** direct inter-regional trains from Paris-Bercy station. The duration of the trip is 3h45. Or TGV (fast trains) from Paris Gare de Lyon and connection in Lyon/Le Creusot-Monceau/Dijon to take a regional train to Chalon-sur-Saône. The duration of the trip varies from 2h50 to 3h45. To plan your trip, <https://en.oui.sncf/en/>

### Parking

If you drive to Chalon-sur-Saône, you can park your car in a secured car park located in the city center. The weekly rate is about 30€.

You can also park for free along the river banks.

All details park will be given in your travel documents.

### To get back to starting point:

Regional trains take you back to your starting point if you wish. They are accessible without booking in advance and bicycles are free. You have to buy your ticket on spot (full rate 6.60€/adult). You will find the timetable of the day in your travel documents.

### Meeting time:

The first day is an arrival day without cycling. You arrive whenever you want depending on from where you come. Please note that rooms are usually available in the middle of the afternoon depending on your accommodation. We thank you to advise us if you plan to arrive late.

## Price description

### Category A

879 €/pers

Double room fare

6 nights in 2\* and 3\* hotels or bed&breakfasts

6 breakfasts

5-day rental of a fully-equipped bike

the luggage transport

a road book with maps and descriptions of the routes

the delivery and return of the bikes

the access to our mobile app including the roadbook and the practical and tourist information

7/7 hotline

High season extra (\*)

40 €/pers

Half-board

33 €/dinner

Extra for a single room (\*\*)

65 €/night

Extra night in Chalon

60 €/pers

Extra night in Beaune

78 €/pers

---

**Category B****1059 €/pers**

Double room fare

6 nights in 3\* and 4\* hotels  
6 breakfasts  
5-day rental of a fully-equipped bike  
the luggage transport  
a road book with maps and descriptions of the routes  
the delivery and return of the bikes  
the access to our mobile app including the roadbook and the practical and tourist information  
7/7 hotline

High season extra (*)	20 €/pers
Half-board	Upon request
Extra for a single room (**)	82 €/night
Extra night in Chalon	78 €/pers
Extra night in Beaune	88 €/pers

---

**Options**

Discount if you ride your own bicycle	-100 €/pers
Extra for the rental of an electric bike	190 €/pers
Solo traveller extra	260 €

---

**(\*) High season:**

- from 06.04 to 20.05.2024
- from 29.06 to 20.09.2024

**Children discount** (in the same room as 2 full rate participants):

- 0-4 year : -70%
- 5-11 year : -50%
- 12-17 year : -30%

(\*\*) These prices are guaranteed for 2 participants minimum.

**The package doesn't include:**

the journey to the tour location  
the drinks  
the meals which are not included  
the entrance fee to sites  
insurances (optional)  
local visitors' taxes

For more information or booking : [www.levelovoyageur.com](http://www.levelovoyageur.com)  
+33 (0)1 80 91 98 18 or [bonjour@levelovoyageur.com](mailto:bonjour@levelovoyageur.com)